

Appendix A.12.3

Photomontages – Key Locations

A.12.3 Photomontages - Key Locations

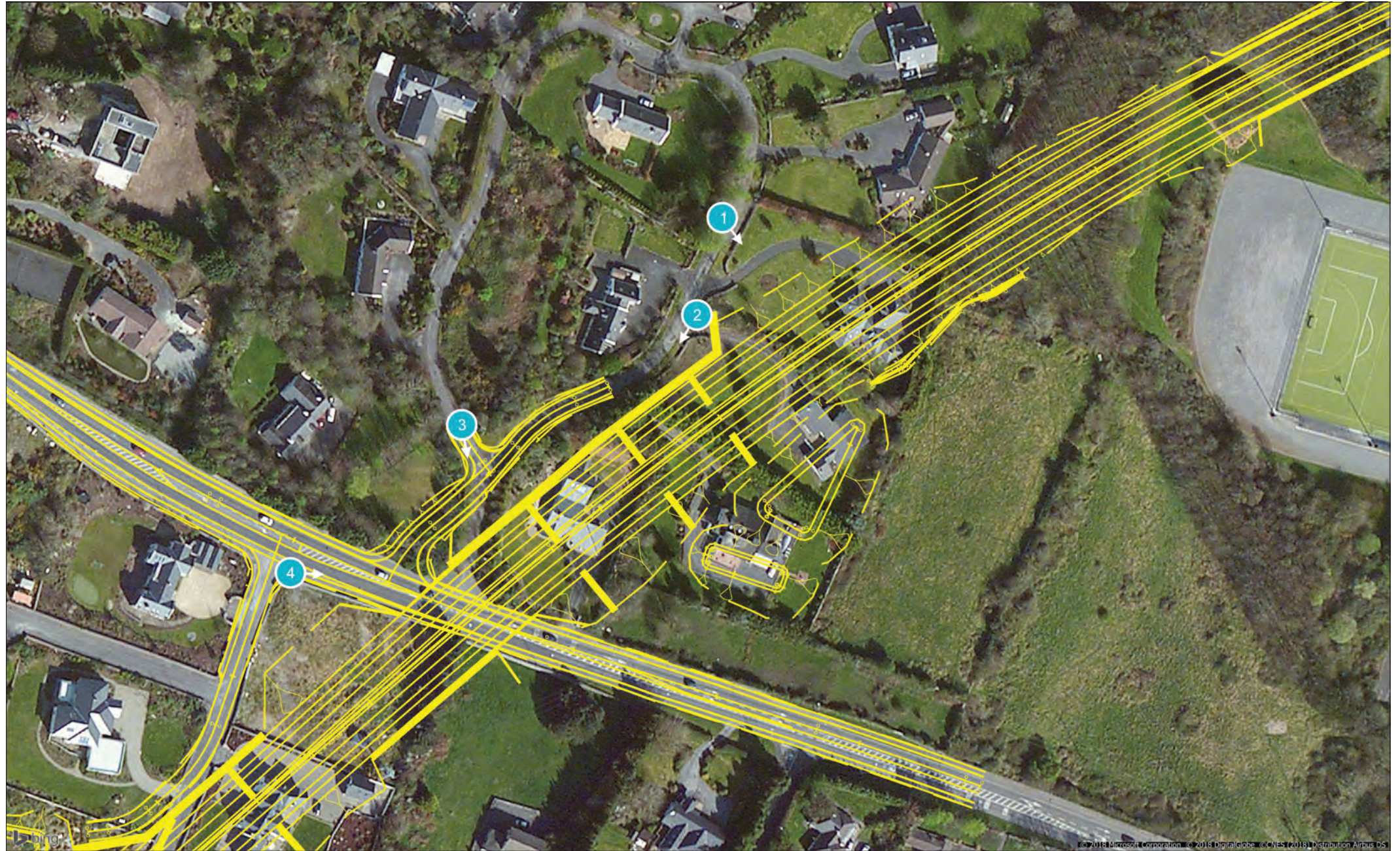


Figure: 1.0

Rev: 03
View Location Map

Project Number:	6085	Document Number:	VIS-RES1	Revision:	06
Project Name:	N6 GALWAY CITY RING ROAD	Document Title:	RESIDENTS PHOTOMONTAGES (AUGHNACURRA)	Date:	23 September 2024



< 73.7° / 24mm	< 65.5° / 28mm	< 54.4° / 35mm	< 39.6° / 50mm	< 28.8° / 70mm	ANGLE OF VISION / LENS FOCAL LENGTH	70mm / 28.8° >	50mm / 39.6° >	35mm / 54.4° >	28mm / 65.5° >	24mm / 73.7° >
----------------	----------------	----------------	----------------	----------------	-------------------------------------	----------------	----------------	----------------	----------------	----------------

Figure: 1.1.1a

Rev: 00
View 1
As Existing (2024)

BSM
Est. 1968

Brady Shipman
Martin.
Built.
Environment.

Project Number:	6085	Document Number:	VIS-RES1	Revision:	06
Project Name:	N6 GALWAY CITY RING ROAD	Document Title:	RESIDENTS PHOTOMONTAGES (AUGHNACURRA)	Date:	23 September 2024



< 73.7° / 24mm	< 65.5° / 28mm	< 54.4° / 35mm	< 39.6° / 50mm	< 28.8° / 70mm	ANGLE OF VISION / LENS FOCAL LENGTH	70mm / 28.8° >	50mm / 39.6° >	35mm / 54.4° >	28mm / 65.5° >	24mm / 73.7° >
----------------	----------------	----------------	----------------	----------------	-------------------------------------	----------------	----------------	----------------	----------------	----------------

Figure: 1.1.1

Rev: 00
View 1
As Existing

BSM

Brady Shipman
Martin.
Built.
Environment.

Est.
1968

Project Number:	6085	Document Number:	VIS-RES1	Revision:	06
Project Name:	N6 GALWAY CITY RING ROAD	Document Title:	RESIDENTS PHOTOMONTAGES (AUGHNACURRA)	Date:	23 September 2024



< 73.7° / 24mm	< 65.5° / 28mm	< 54.4° / 35mm	< 39.6° / 50mm	< 28.8° / 70mm	ANGLE OF VISION / LENS FOCAL LENGTH	70mm / 28.8° >	50mm / 39.6° >	35mm / 54.4° >	28mm / 65.5° >	24mm / 73.7° >
----------------	----------------	----------------	----------------	----------------	-------------------------------------	----------------	----------------	----------------	----------------	----------------

Figure: 1.1.2

Rev: 05
View 1
Post Construction

BSM

Est. 1968

Brady Shipman
Martin.
Built.
Environment.

Project Number:	6085	Document Number:	VIS-RES1	Revision:	06
Project Name:	N6 GALWAY CITY RING ROAD	Document Title:	RESIDENTS PHOTOMONTAGES (AUGHNACURRA)	Date:	23 September 2024



< 73.7° / 24mm	< 65.5° / 28mm	< 54.4° / 35mm	< 39.6° / 50mm	< 28.8° / 70mm	ANGLE OF VISION / LENS FOCAL LENGTH	70mm / 28.8° >	50mm / 39.6° >	35mm / 54.4° >	28mm / 65.5° >	24mm / 73.7° >
----------------	----------------	----------------	----------------	----------------	-------------------------------------	----------------	----------------	----------------	----------------	----------------

Figure: 1.1.3

Rev: 05
View 1
Post Maturation

BSM

Est. 1968

Brady Shipman
Martin.
Built.
Environment.

Project Number:	6085	Document Number:	VIS-RES1	Revision:	06
Project Name:	N6 GALWAY CITY RING ROAD	Document Title:	RESIDENTS PHOTOMONTAGES (AUGHNACURRA)	Date:	23 September 2024



< 73.7° / 24mm	< 65.5° / 28mm	< 54.4° / 35mm	< 39.6° / 50mm	< 28.8° / 70mm	ANGLE OF VISION / LENS FOCAL LENGTH	70mm / 28.8° >	50mm / 39.6° >	35mm / 54.4° >	28mm / 65.5° >	24mm / 73.7° >
----------------	----------------	----------------	----------------	----------------	-------------------------------------	----------------	----------------	----------------	----------------	----------------

Figure: 1.2.1a

Rev: 00
View 2
As Existing (2024)

BSM
Est. 1968

Brady Shipman
Martin.
Built.
Environment.

Project Number:	6085	Document Number:	VIS-RES1	Revision:	06
Project Name:	N6 GALWAY CITY RING ROAD	Document Title:	RESIDENTS PHOTOMONTAGES (AUGHNACURRA)	Date:	23 September 2024



< 73.7° / 24mm	< 65.5° / 28mm	< 54.4° / 35mm	< 39.6° / 50mm	< 28.8° / 70mm	ANGLE OF VISION / LENS FOCAL LENGTH	70mm / 28.8° >	50mm / 39.6° >	35mm / 54.4° >	28mm / 65.5° >	24mm / 73.7° >
----------------	----------------	----------------	----------------	----------------	-------------------------------------	----------------	----------------	----------------	----------------	----------------

Figure: 1.2.1

Rev: 00
View 2
As Existing

BSM

Brady Shipman
Martin.
Built.
Environment.

Est.
1968

Project Number:	6085	Document Number:	VIS-RES1	Revision:	06
Project Name:	N6 GALWAY CITY RING ROAD	Document Title:	RESIDENTS PHOTOMONTAGES (AUGHNACURRA)	Date:	23 September 2024



< 73.7° / 24mm	< 65.5° / 28mm	< 54.4° / 35mm	< 39.6° / 50mm	< 28.8° / 70mm	ANGLE OF VISION / LENS FOCAL LENGTH	70mm / 28.8° >	50mm / 39.6° >	35mm / 54.4° >	28mm / 65.5° >	24mm / 73.7° >
----------------	----------------	----------------	----------------	----------------	-------------------------------------	----------------	----------------	----------------	----------------	----------------

Project Number:	6085	Document Number:	VIS-RES1	Revision:	06
Project Name:	N6 GALWAY CITY RING ROAD	Document Title:	RESIDENTS PHOTOMONTAGES (AUGHNACURRA)	Date:	23 September 2024



< 73.7° / 24mm	< 65.5° / 28mm	< 54.4° / 35mm	< 39.6° / 50mm	< 28.8° / 70mm	ANGLE OF VISION / LENS FOCAL LENGTH	70mm / 28.8° >	50mm / 39.6° >	35mm / 54.4° >	28mm / 65.5° >	24mm / 73.7° >
----------------	----------------	----------------	----------------	----------------	-------------------------------------	----------------	----------------	----------------	----------------	----------------

Figure: 1.2.3

Rev: 05
View 2
Post Maturation

BSM
Est. 1968

Brady Shipman
Martin.
Built.
Environment.

Project Number:	6085	Document Number:	VIS-RES1	Revision:	06
Project Name:	N6 GALWAY CITY RING ROAD	Document Title:	RESIDENTS PHOTOMONTAGES (AUGHNACURRA)	Date:	23 September 2024



THE IMAGE ABOVE IS A PANORAMA ASSEMBLED FROM TWO OR MORE PHOTOGRAPHS

Figure: 1.3.1a

Rev: 00
View 3
As Existing (2024)

BSM

Est. 1968

Brady Shipman
Martin.
Built.
Environment.

Project Number:	6085	Document Number:	VIS-RES1	Revision:	06
Project Name:	N6 GALWAY CITY RING ROAD	Document Title:	RESIDENTS PHOTOMONTAGES (AUGHNACURRA)	Date:	23 September 2024



THE IMAGE ABOVE IS A PANORAMA ASSEMBLED FROM TWO OR MORE PHOTOGRAPHS

Figure: 1.3.1

Project Number:	6085	Document Number:	VIS-RES1	Revision:	06
Project Name:	N6 GALWAY CITY RING ROAD	Document Title:	RESIDENTS PHOTOMONTAGES (AUGHNACURRA)	Date:	23 September 2024



THE IMAGE ABOVE IS A PANORAMA ASSEMBLED FROM TWO OR MORE PHOTOGRAPHS

Project Number:	6085	Document Number:	VIS-RES1	Revision:	06
Project Name:	N6 GALWAY CITY RING ROAD	Document Title:	RESIDENTS PHOTOMONTAGES (AUGHNACURRA)	Date:	23 September 2024



THE IMAGE ABOVE IS A PANORAMA ASSEMBLED FROM TWO OR MORE PHOTOGRAPHS

Figure: 1.3.3

Rev: 05
View 3
Post Maturation

BSM

Est. 1968

Brady Shipman
Martin.
Built.
Environment.

Project Number:	6085	Document Number:	VIS-RES1	Revision:	06
Project Name:	N6 GALWAY CITY RING ROAD	Document Title:	RESIDENTS PHOTOMONTAGES (AUGHNACURRA)	Date:	23 September 2024



< 73.7° / 24mm	< 65.5° / 28mm	< 54.4° / 35mm	< 39.6° / 50mm	< 28.8° / 70mm	ANGLE OF VISION / LENS FOCAL LENGTH	70mm / 28.8° >	50mm / 39.6° >	35mm / 54.4° >	28mm / 65.5° >	24mm / 73.7° >
----------------	----------------	----------------	----------------	----------------	-------------------------------------	----------------	----------------	----------------	----------------	----------------

Project Number:	6085	Document Number:	VIS-RES1	Revision:	06
Project Name:	N6 GALWAY CITY RING ROAD	Document Title:	RESIDENTS PHOTOMONTAGES (AUGHNACURRA)	Date:	23 September 2024



< 73.7° / 24mm	< 65.5° / 28mm	< 54.4° / 35mm	< 39.6° / 50mm	< 28.8° / 70mm	ANGLE OF VISION / LENS FOCAL LENGTH	70mm / 28.8° >	50mm / 39.6° >	35mm / 54.4° >	28mm / 65.5° >	24mm / 73.7° >
----------------	----------------	----------------	----------------	----------------	-------------------------------------	----------------	----------------	----------------	----------------	----------------

Figure: 1.4.1

Rev: 00
View 4
As Existing

BSM

Brady Shipman
Martin.
Built.
Environment.

Est.
1968

Project Number:	6085	Document Number:	VIS-RES1	Revision:	06
Project Name:	N6 GALWAY CITY RING ROAD	Document Title:	RESIDENTS PHOTOMONTAGES (AUGHNACURRA)	Date:	23 September 2024



< 73.7° / 24mm	< 65.5° / 28mm	< 54.4° / 35mm	< 39.6° / 50mm	< 28.8° / 70mm	ANGLE OF VISION / LENS FOCAL LENGTH	70mm / 28.8° >	50mm / 39.6° >	35mm / 54.4° >	28mm / 65.5° >	24mm / 73.7° >
----------------	----------------	----------------	----------------	----------------	-------------------------------------	----------------	----------------	----------------	----------------	----------------



< 73.7° / 24mm	< 65.5° / 28mm	< 54.4° / 35mm	< 39.6° / 50mm	< 28.8° / 70mm	ANGLE OF VISION / LENS FOCAL LENGTH	70mm / 28.8° >	50mm / 39.6° >	35mm / 54.4° >	28mm / 65.5° >	24mm / 73.7° >
----------------	----------------	----------------	----------------	----------------	-------------------------------------	----------------	----------------	----------------	----------------	----------------

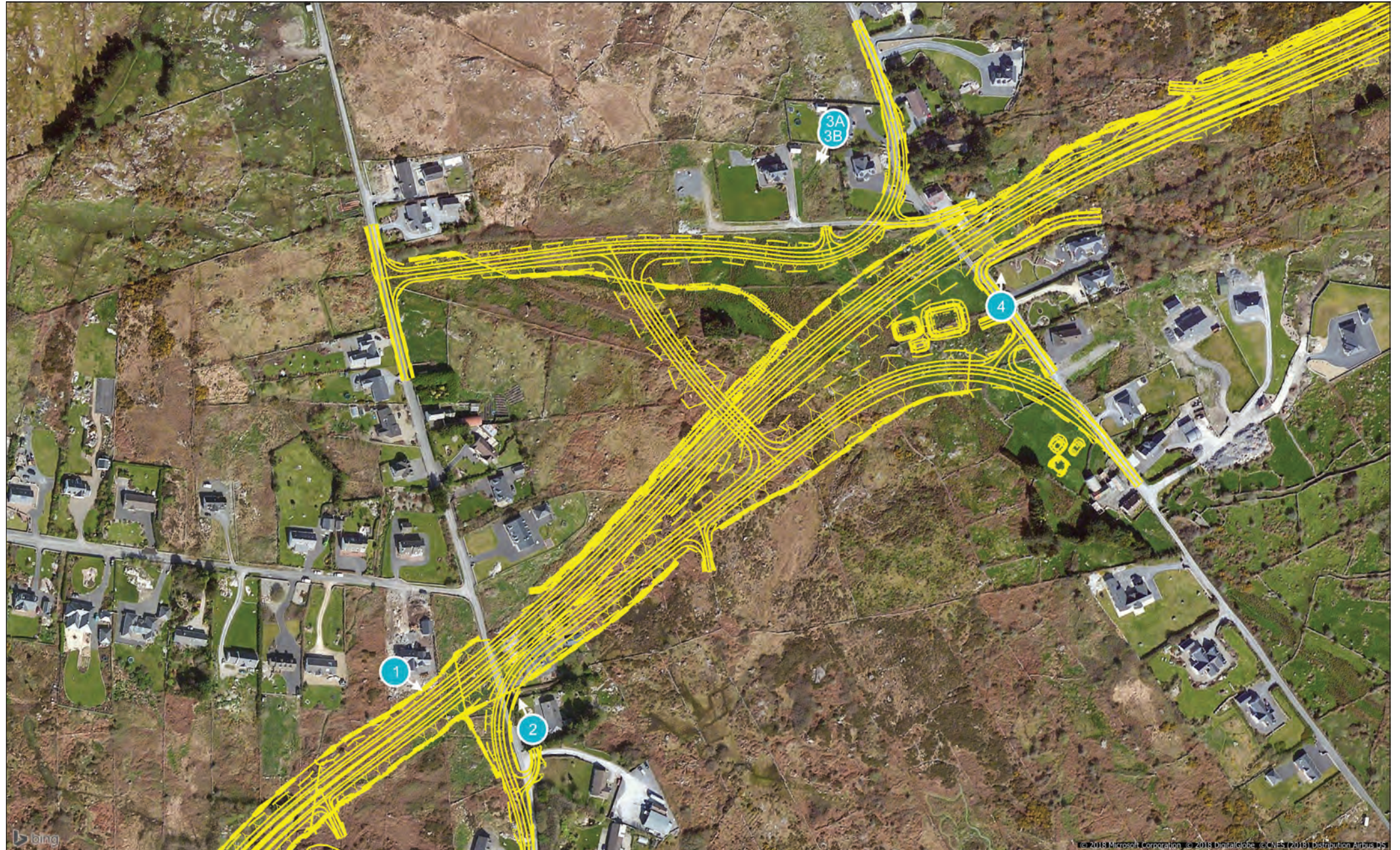


Figure: 1.0

Rev: 00
View Location Map

Project Number:	6085	Document Number:	VIS-RES2	Revision:	04
Project Name:	N6 GALWAY CITY RING ROAD	Document Title:	RESIDENTS PHOTOMONTAGES (FORRAMOYLE)	Date:	23 September 2024



< 73.7° / 24mm	< 65.5° / 28mm	< 54.4° / 35mm	< 39.6° / 50mm	< 28.8° / 70mm	ANGLE OF VISION / LENS FOCAL LENGTH	70mm / 28.8° >	50mm / 39.6° >	35mm / 54.4° >	28mm / 65.5° >	24mm / 73.7° >
----------------	----------------	----------------	----------------	----------------	-------------------------------------	----------------	----------------	----------------	----------------	----------------

Project Number:	6085	Document Number:	VIS-RES2	Revision:	04
Project Name:	N6 GALWAY CITY RING ROAD	Document Title:	RESIDENTS PHOTOMONTAGES (FORRAMOYLE)	Date:	23 September 2024



< 73.7° / 24mm	< 65.5° / 28mm	< 54.4° / 35mm	< 39.6° / 50mm	< 28.8° / 70mm	ANGLE OF VISION / LENS FOCAL LENGTH	70mm / 28.8° >	50mm / 39.6° >	35mm / 54.4° >	28mm / 65.5° >	24mm / 73.7° >
----------------	----------------	----------------	----------------	----------------	-------------------------------------	----------------	----------------	----------------	----------------	----------------

Figure: 1.1.1

Rev: 00
View 1
As Existing

BSM
Est. 1968

Brady Shipman
Martin.
Built.
Environment.

Project Number:	6085	Document Number:	VIS-RES2	Revision:	04
Project Name:	N6 GALWAY CITY RING ROAD	Document Title:	RESIDENTS PHOTOMONTAGES (FORRAMOYLE)	Date:	23 September 2024



< 73.7° / 24mm	< 65.5° / 28mm	< 54.4° / 35mm	< 39.6° / 50mm	< 28.8° / 70mm	ANGLE OF VISION / LENS FOCAL LENGTH	70mm / 28.8° >	50mm / 39.6° >	35mm / 54.4° >	28mm / 65.5° >	24mm / 73.7° >
----------------	----------------	----------------	----------------	----------------	-------------------------------------	----------------	----------------	----------------	----------------	----------------

Project Number:	6085	Document Number:	VIS-RES2	Revision:	04
Project Name:	N6 GALWAY CITY RING ROAD	Document Title:	RESIDENTS PHOTOMONTAGES (FORRAMOYLE)	Date:	23 September 2024



< 73.7° / 24mm	< 65.5° / 28mm	< 54.4° / 35mm	< 39.6° / 50mm	< 28.8° / 70mm	ANGLE OF VISION / LENS FOCAL LENGTH	70mm / 28.8° >	50mm / 39.6° >	35mm / 54.4° >	28mm / 65.5° >	24mm / 73.7° >
----------------	----------------	----------------	----------------	----------------	-------------------------------------	----------------	----------------	----------------	----------------	----------------

Figure: 1.1.3

Rev: 02
View 1
Post Maturation

BSM
Est. 1968

Brady Shipman
Martin.
Built.
Environment.

Project Number:	6085	Document Number:	VIS-RES2	Revision:	04
Project Name:	N6 GALWAY CITY RING ROAD	Document Title:	RESIDENTS PHOTOMONTAGES (FORRAMOYLE)	Date:	23 September 2024



THE IMAGE ABOVE IS A PANORAMA ASSEMBLED FROM TWO OR MORE PHOTOGRAPHS

Figure: 1.2.1a

Rev: 00
View 2
As Existing (2024)

BSM

Est. 1968

Brady Shipman
Martin.
Built.
Environment.



THE IMAGE ABOVE IS A PANORAMA ASSEMBLED FROM TWO OR MORE PHOTOGRAPHS

Figure: 1.2.1



THE IMAGE ABOVE IS A PANORAMA ASSEMBLED FROM TWO OR MORE PHOTOGRAPHS

Figure: 1.2.2

Rev: 02
View 2
Post Construction

BSM

Est. 1968

Brady Shipman
Martin.
Built.
Environment.



THE IMAGE ABOVE IS A PANORAMA ASSEMBLED FROM TWO OR MORE PHOTOGRAPHS

Figure: 1.2.3

Project Number:	6085	Document Number:	VIS-RES2	Revision:	04
Project Name:	N6 GALWAY CITY RING ROAD	Document Title:	RESIDENTS PHOTOMONTAGES (FORRAMOYLE)	Date:	23 September 2024



< 73.7° / 24mm	< 65.5° / 28mm	< 54.4° / 35mm	< 39.6° / 50mm	< 28.8° / 70mm	ANGLE OF VISION / LENS FOCAL LENGTH	70mm / 28.8° >	50mm / 39.6° >	35mm / 54.4° >	28mm / 65.5° >	24mm / 73.7° >
----------------	----------------	----------------	----------------	----------------	-------------------------------------	----------------	----------------	----------------	----------------	----------------

Figure: 1.3.1

Rev: 00
View 3A
As Existing

BSM
Est. 1968

Brady Shipman
Martin.
Built.
Environment.

Project Number:	6085	Document Number:	VIS-RES2	Revision:	04
Project Name:	N6 GALWAY CITY RING ROAD	Document Title:	RESIDENTS PHOTOMONTAGES (FORRAMOYLE)	Date:	23 September 2024



< 73.7° / 24mm	< 65.5° / 28mm	< 54.4° / 35mm	< 39.6° / 50mm	< 28.8° / 70mm	ANGLE OF VISION / LENS FOCAL LENGTH	70mm / 28.8° >	50mm / 39.6° >	35mm / 54.4° >	28mm / 65.5° >	24mm / 73.7° >
----------------	----------------	----------------	----------------	----------------	-------------------------------------	----------------	----------------	----------------	----------------	----------------

Project Number:	6085	Document Number:	VIS-RES2	Revision:	04
Project Name:	N6 GALWAY CITY RING ROAD	Document Title:	RESIDENTS PHOTOMONTAGES (FORRAMOYLE)	Date:	23 September 2024



< 73.7° / 24mm	< 65.5° / 28mm	< 54.4° / 35mm	< 39.6° / 50mm	< 28.8° / 70mm	ANGLE OF VISION / LENS FOCAL LENGTH	70mm / 28.8° >	50mm / 39.6° >	35mm / 54.4° >	28mm / 65.5° >	24mm / 73.7° >
----------------	----------------	----------------	----------------	----------------	-------------------------------------	----------------	----------------	----------------	----------------	----------------

Figure: 1.3.3

Rev: 02
View 3A
Post Maturation

BSM
Est. 1968

Brady Shipman
Martin.
Built.
Environment.

Project Number:	6085	Document Number:	VIS-RES2	Revision:	04
Project Name:	N6 GALWAY CITY RING ROAD	Document Title:	RESIDENTS PHOTOMONTAGES (FORRAMOYLE)	Date:	23 September 2024



< 73.7° / 24mm	< 65.5° / 28mm	< 54.4° / 35mm	< 39.6° / 50mm	< 28.8° / 70mm	ANGLE OF VISION / LENS FOCAL LENGTH	70mm / 28.8° >	50mm / 39.6° >	35mm / 54.4° >	28mm / 65.5° >	24mm / 73.7° >
----------------	----------------	----------------	----------------	----------------	-------------------------------------	----------------	----------------	----------------	----------------	----------------

Figure: 1.3.4a

Rev: 00
View 3B
As Existing (2024)

BSM
Est. 1968

Brady Shipman
Martin.
Built.
Environment.

Project Number:	6085	Document Number:	VIS-RES2	Revision:	04
Project Name:	N6 GALWAY CITY RING ROAD	Document Title:	RESIDENTS PHOTOMONTAGES (FORRAMOYLE)	Date:	23 September 2024



< 73.7° / 24mm	< 65.5° / 28mm	< 54.4° / 35mm	< 39.6° / 50mm	< 28.8° / 70mm	ANGLE OF VISION / LENS FOCAL LENGTH	70mm / 28.8° >	50mm / 39.6° >	35mm / 54.4° >	28mm / 65.5° >	24mm / 73.7° >
----------------	----------------	----------------	----------------	----------------	-------------------------------------	----------------	----------------	----------------	----------------	----------------

Project Number:	6085	Document Number:	VIS-RES2	Revision:	04
Project Name:	N6 GALWAY CITY RING ROAD	Document Title:	RESIDENTS PHOTOMONTAGES (FORRAMOYLE)	Date:	23 September 2024



< 73.7° / 24mm	< 65.5° / 28mm	< 54.4° / 35mm	< 39.6° / 50mm	< 28.8° / 70mm	ANGLE OF VISION / LENS FOCAL LENGTH	70mm / 28.8° >	50mm / 39.6° >	35mm / 54.4° >	28mm / 65.5° >	24mm / 73.7° >
----------------	----------------	----------------	----------------	----------------	-------------------------------------	----------------	----------------	----------------	----------------	----------------

Figure: 1.3.5

Rev: 02
View 3B
Post Construction

BSM
Est. 1968

Brady Shipman
Martin.
Built.
Environment.

Project Number:	6085	Document Number:	VIS-RES2	Revision:	04
Project Name:	N6 GALWAY CITY RING ROAD	Document Title:	RESIDENTS PHOTOMONTAGES (FORRAMOYLE)	Date:	23 September 2024



< 73.7° / 24mm	< 65.5° / 28mm	< 54.4° / 35mm	< 39.6° / 50mm	< 28.8° / 70mm	ANGLE OF VISION / LENS FOCAL LENGTH	70mm / 28.8° >	50mm / 39.6° >	35mm / 54.4° >	28mm / 65.5° >	24mm / 73.7° >
----------------	----------------	----------------	----------------	----------------	-------------------------------------	----------------	----------------	----------------	----------------	----------------

Project Number:	6085	Document Number:	VIS-RES2	Revision:	04
Project Name:	N6 GALWAY CITY RING ROAD	Document Title:	RESIDENTS PHOTOMONTAGES (FORRAMOYLE)	Date:	23 September 2024



THE IMAGE ABOVE IS A PANORAMA ASSEMBLED FROM TWO OR MORE PHOTOGRAPHS

Figure: 1.4.1a

Rev: 01
View 4
As Existing (2024)

BSM

Est. 1968

Brady Shipman
Martin.
Built.
Environment.

Project Number:	6085	Document Number:	VIS-RES2	Revision:	04
Project Name:	N6 GALWAY CITY RING ROAD	Document Title:	RESIDENTS PHOTOMONTAGES (FORRAMOYLE)	Date:	23 September 2024



THE IMAGE ABOVE IS A PANORAMA ASSEMBLED FROM TWO OR MORE PHOTOGRAPHS

Figure: 1.4.1

Project Number:	6085	Document Number:	VIS-RES2	Revision:	04
Project Name:	N6 GALWAY CITY RING ROAD	Document Title:	RESIDENTS PHOTOMONTAGES (FORRAMOYLE)	Date:	23 September 2024



THE IMAGE ABOVE IS A PANORAMA ASSEMBLED FROM TWO OR MORE PHOTOGRAPHS

Figure: 1.4.2

Rev: 02
View 4
Post Construction

BSM

Est. 1968

Brady Shipman
Martin.
Built.
Environment.

Project Number:	6085	Document Number:	VIS-RES2	Revision:	04
Project Name:	N6 GALWAY CITY RING ROAD	Document Title:	RESIDENTS PHOTOMONTAGES (FORRAMOYLE)	Date:	23 September 2024



THE IMAGE ABOVE IS A PANORAMA ASSEMBLED FROM TWO OR MORE PHOTOGRAPHS

Figure: 1.4.3

Rev: 02
View 4
Post Maturation

BSM

Est. 1968

Brady Shipman
Martin.
Built.
Environment.

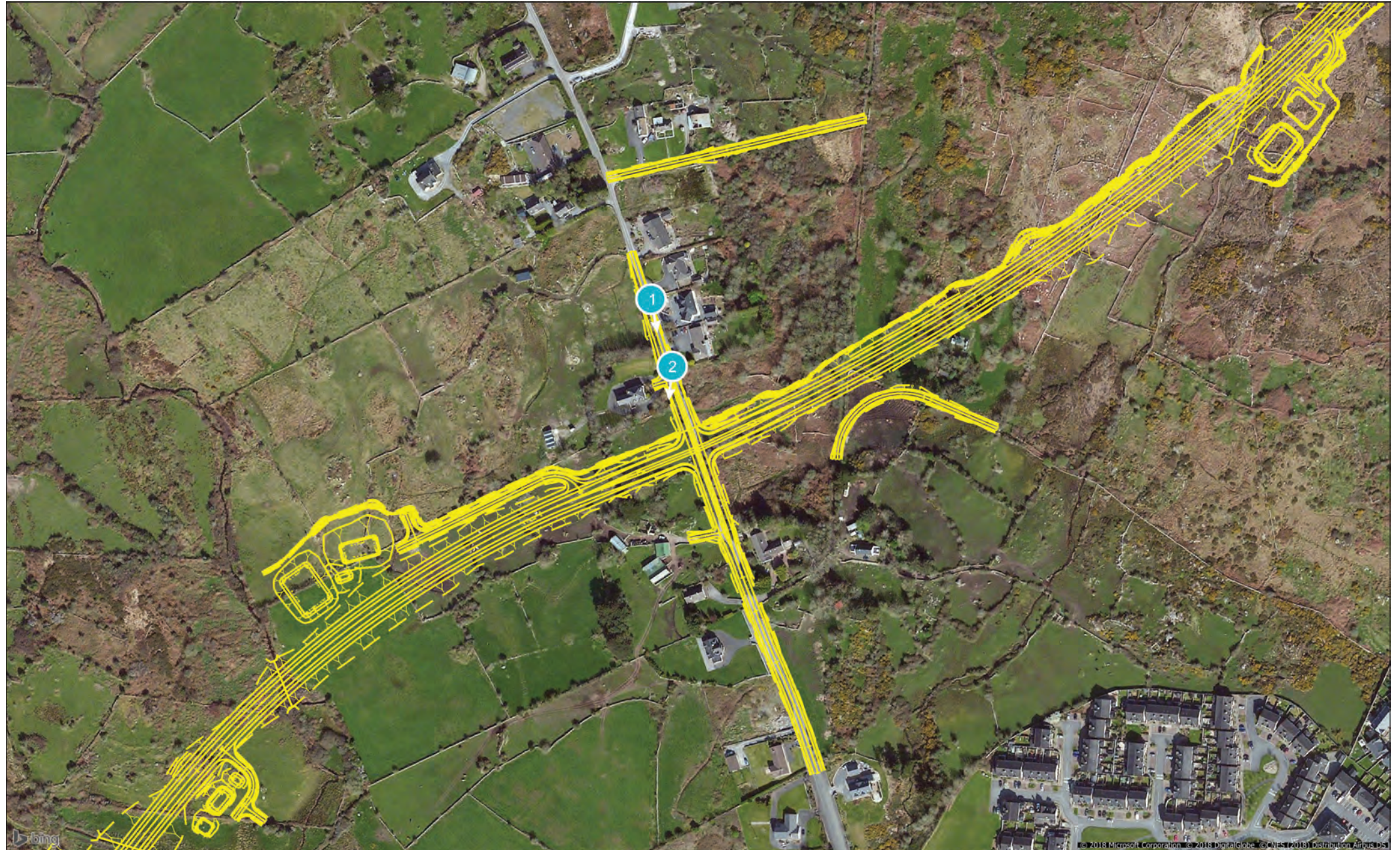


Figure: 1.0

Rev: 00
View Location Map

Project Number:	6085	Document Number:	VIS-RES3	Revision:	04
Project Name:	N6 GALWAY CITY RING ROAD	Document Title:	RESIDENTS PHOTOMONTAGES (CAPPAGH)	Date:	23 September 2024



< 73.7° / 24mm	< 65.5° / 28mm	< 54.4° / 35mm	< 39.6° / 50mm	< 28.8° / 70mm	ANGLE OF VISION / LENS FOCAL LENGTH	70mm / 28.8° >	50mm / 39.6° >	35mm / 54.4° >	28mm / 65.5° >	24mm / 73.7° >
----------------	----------------	----------------	----------------	----------------	-------------------------------------	----------------	----------------	----------------	----------------	----------------

Project Number:	6085	Document Number:	VIS-RES3	Revision:	04
Project Name:	N6 GALWAY CITY RING ROAD	Document Title:	RESIDENTS PHOTOMONTAGES (CAPPAGH)	Date:	23 September 2024



< 73.7° / 24mm	< 65.5° / 28mm	< 54.4° / 35mm	< 39.6° / 50mm	< 28.8° / 70mm	ANGLE OF VISION / LENS FOCAL LENGTH	70mm / 28.8° >	50mm / 39.6° >	35mm / 54.4° >	28mm / 65.5° >	24mm / 73.7° >
----------------	----------------	----------------	----------------	----------------	-------------------------------------	----------------	----------------	----------------	----------------	----------------

Figure: 1.1.1

Rev: 00
View 1
As Existing

BSM

Brady Shipman
Martin.
Built.
Environment.

Est.
1968

Project Number:	6085	Document Number:	VIS-RES3	Revision:	04
Project Name:	N6 GALWAY CITY RING ROAD	Document Title:	RESIDENTS PHOTOMONTAGES (CAPPAGH)	Date:	23 September 2024



< 73.7° / 24mm	< 65.5° / 28mm	< 54.4° / 35mm	< 39.6° / 50mm	< 28.8° / 70mm	ANGLE OF VISION / LENS FOCAL LENGTH	70mm / 28.8° >	50mm / 39.6° >	35mm / 54.4° >	28mm / 65.5° >	24mm / 73.7° >
----------------	----------------	----------------	----------------	----------------	-------------------------------------	----------------	----------------	----------------	----------------	----------------

Figure: 1.1.1

Rev: 00
View 1
As Existing

BSM

Brady Shipman
Martin.
Built.
Environment.

Est.
1968

Project Number:	6085	Document Number:	VIS-RES3	Revision:	04
Project Name:	N6 GALWAY CITY RING ROAD	Document Title:	RESIDENTS PHOTOMONTAGES (CAPPAGH)	Date:	23 September 2024



< 73.7° / 24mm	< 65.5° / 28mm	< 54.4° / 35mm	< 39.6° / 50mm	< 28.8° / 70mm	ANGLE OF VISION / LENS FOCAL LENGTH	70mm / 28.8° >	50mm / 39.6° >	35mm / 54.4° >	28mm / 65.5° >	24mm / 73.7° >
----------------	----------------	----------------	----------------	----------------	-------------------------------------	----------------	----------------	----------------	----------------	----------------

Project Number:	6085	Document Number:	VIS-RES3	Revision:	04
Project Name:	N6 GALWAY CITY RING ROAD	Document Title:	RESIDENTS PHOTOMONTAGES (CAPPAGH)	Date:	23 September 2024



< 73.7° / 24mm	< 65.5° / 28mm	< 54.4° / 35mm	< 39.6° / 50mm	< 28.8° / 70mm	ANGLE OF VISION / LENS FOCAL LENGTH	70mm / 28.8° >	50mm / 39.6° >	35mm / 54.4° >	28mm / 65.5° >	24mm / 73.7° >
----------------	----------------	----------------	----------------	----------------	-------------------------------------	----------------	----------------	----------------	----------------	----------------

Figure: 1.1.3

Rev: 02
View 1
Post Maturation

BSM
Est. 1968

Brady Shipman
Martin.
Built.
Environment.

Project Number:	6085	Document Number:	VIS-RES3	Revision:	04
Project Name:	N6 GALWAY CITY RING ROAD	Document Title:	RESIDENTS PHOTOMONTAGES (CAPPAGH)	Date:	23 September 2024



< 73.7° / 24mm	< 65.5° / 28mm	< 54.4° / 35mm	< 39.6° / 50mm	< 28.8° / 70mm	ANGLE OF VISION / LENS FOCAL LENGTH	70mm / 28.8° >	50mm / 39.6° >	35mm / 54.4° >	28mm / 65.5° >	24mm / 73.7° >
----------------	----------------	----------------	----------------	----------------	-------------------------------------	----------------	----------------	----------------	----------------	----------------

Figure: 1.2.1a

Rev: 00
View 2
As Existing (2024)

BSM
Est. 1968

Brady Shipman
Martin.
Built.
Environment.

Project Number:	6085	Document Number:	VIS-RES3	Revision:	04
Project Name:	N6 GALWAY CITY RING ROAD	Document Title:	RESIDENTS PHOTOMONTAGES (CAPPAGH)	Date:	23 September 2024



< 73.7° / 24mm	< 65.5° / 28mm	< 54.4° / 35mm	< 39.6° / 50mm	< 28.8° / 70mm	ANGLE OF VISION / LENS FOCAL LENGTH	70mm / 28.8° >	50mm / 39.6° >	35mm / 54.4° >	28mm / 65.5° >	24mm / 73.7° >
----------------	----------------	----------------	----------------	----------------	-------------------------------------	----------------	----------------	----------------	----------------	----------------

Figure: 1.2.1

Rev: 00
View 2
As Existing

BSM

Brady Shipman
Martin.
Built.
Environment.

Est.
1968



< 73.7° / 24mm	< 65.5° / 28mm	< 54.4° / 35mm	< 39.6° / 50mm	< 28.8° / 70mm	ANGLE OF VISION / LENS FOCAL LENGTH	70mm / 28.8° >	50mm / 39.6° >	35mm / 54.4° >	28mm / 65.5° >	24mm / 73.7° >
----------------	----------------	----------------	----------------	----------------	-------------------------------------	----------------	----------------	----------------	----------------	----------------



< 73.7° / 24mm	< 65.5° / 28mm	< 54.4° / 35mm	< 39.6° / 50mm	< 28.8° / 70mm	ANGLE OF VISION / LENS FOCAL LENGTH	70mm / 28.8° >	50mm / 39.6° >	35mm / 54.4° >	28mm / 65.5° >	24mm / 73.7° >
----------------	----------------	----------------	----------------	----------------	-------------------------------------	----------------	----------------	----------------	----------------	----------------

Figure: 1.2.3

Rev: 02
View 2
Post Maturation

BSM
Est. 1968

Brady Shipman
Martin.
Built.
Environment.

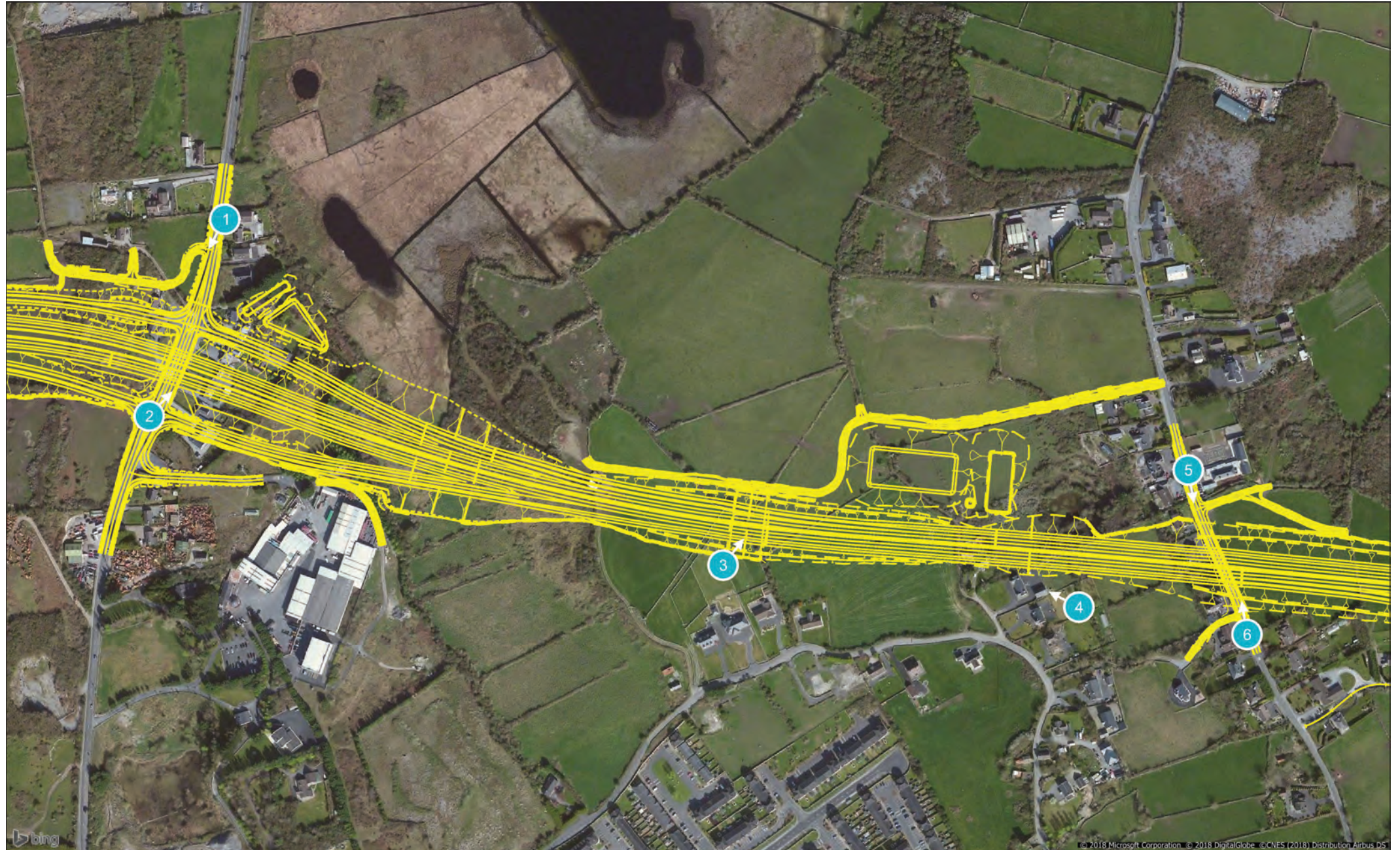


Figure: 1.0

Rev: 00
View Location Map

Project Number:	6085	Document Number:	VIS-RES4	Revision:	04
Project Name:	N6 GALWAY CITY RING ROAD	Document Title:	RESIDENTS PHOTOMONTAGES (CASTLEGAR)	Date:	23 September 2024



< 73.7° / 24mm	< 65.5° / 28mm	< 54.4° / 35mm	< 39.6° / 50mm	< 28.8° / 70mm	ANGLE OF VISION / LENS FOCAL LENGTH	70mm / 28.8° >	50mm / 39.6° >	35mm / 54.4° >	28mm / 65.5° >	24mm / 73.7° >
----------------	----------------	----------------	----------------	----------------	-------------------------------------	----------------	----------------	----------------	----------------	----------------

Figure: 1.1.1a

Rev: 00
View 1
As Existing (2024)

BSM
Est. 1968

Brady Shipman
Martin.
Built.
Environment.

Project Number:	6085	Document Number:	VIS-RES4	Revision:	04
Project Name:	N6 GALWAY CITY RING ROAD	Document Title:	RESIDENTS PHOTOMONTAGES (CASTLEGAR)	Date:	23 September 2024



< 73.7° / 24mm	< 65.5° / 28mm	< 54.4° / 35mm	< 39.6° / 50mm	< 28.8° / 70mm	ANGLE OF VISION / LENS FOCAL LENGTH	70mm / 28.8° >	50mm / 39.6° >	35mm / 54.4° >	28mm / 65.5° >	24mm / 73.7° >
----------------	----------------	----------------	----------------	----------------	-------------------------------------	----------------	----------------	----------------	----------------	----------------

Project Number:	6085	Document Number:	VIS-RES4	Revision:	04
Project Name:	N6 GALWAY CITY RING ROAD	Document Title:	RESIDENTS PHOTOMONTAGES (CASTLEGAR)	Date:	23 September 2024



< 73.7° / 24mm	< 65.5° / 28mm	< 54.4° / 35mm	< 39.6° / 50mm	< 28.8° / 70mm	ANGLE OF VISION / LENS FOCAL LENGTH	70mm / 28.8° >	50mm / 39.6° >	35mm / 54.4° >	28mm / 65.5° >	24mm / 73.7° >
----------------	----------------	----------------	----------------	----------------	-------------------------------------	----------------	----------------	----------------	----------------	----------------

Project Number:	6085	Document Number:	VIS-RES4	Revision:	04
Project Name:	N6 GALWAY CITY RING ROAD	Document Title:	RESIDENTS PHOTOMONTAGES (CASTLEGAR)	Date:	23 September 2024



< 73.7° / 24mm	< 65.5° / 28mm	< 54.4° / 35mm	< 39.6° / 50mm	< 28.8° / 70mm	ANGLE OF VISION / LENS FOCAL LENGTH	70mm / 28.8° >	50mm / 39.6° >	35mm / 54.4° >	28mm / 65.5° >	24mm / 73.7° >
----------------	----------------	----------------	----------------	----------------	-------------------------------------	----------------	----------------	----------------	----------------	----------------

Figure: 1.1.3

Rev: 02
View 1
Post Maturation

BSM
Est. 1968

Brady Shipman
Martin.
Built.
Environment.

Project Number:	6085	Document Number:	VIS-RES4	Revision:	04
Project Name:	N6 GALWAY CITY RING ROAD	Document Title:	RESIDENTS PHOTOMONTAGES (CASTLEGAR)	Date:	23 September 2024



< 73.7° / 24mm	< 65.5° / 28mm	< 54.4° / 35mm	< 39.6° / 50mm	< 28.8° / 70mm	ANGLE OF VISION / LENS FOCAL LENGTH	70mm / 28.8° >	50mm / 39.6° >	35mm / 54.4° >	28mm / 65.5° >	24mm / 73.7° >
----------------	----------------	----------------	----------------	----------------	-------------------------------------	----------------	----------------	----------------	----------------	----------------

Figure: 1.2.1a

Rev: 00
View 2
As Existing (2024)

BSM
Est. 1968

Brady Shipman
Martin.
Built.
Environment.

Project Number:	6085	Document Number:	VIS-RES4	Revision:	04
Project Name:	N6 GALWAY CITY RING ROAD	Document Title:	RESIDENTS PHOTOMONTAGES (CASTLEGAR)	Date:	23 September 2024



< 73.7° / 24mm	< 65.5° / 28mm	< 54.4° / 35mm	< 39.6° / 50mm	< 28.8° / 70mm	ANGLE OF VISION / LENS FOCAL LENGTH	70mm / 28.8° >	50mm / 39.6° >	35mm / 54.4° >	28mm / 65.5° >	24mm / 73.7° >
----------------	----------------	----------------	----------------	----------------	-------------------------------------	----------------	----------------	----------------	----------------	----------------

Figure: 1.2.1

Rev: 00
View 2
As Existing

BSM
Est. 1968

Brady Shipman
Martin.
Built.
Environment.

Project Number:	6085	Document Number:	VIS-RES4	Revision:	04
Project Name:	N6 GALWAY CITY RING ROAD	Document Title:	RESIDENTS PHOTOMONTAGES (CASTLEGAR)	Date:	23 September 2024



< 73.7° / 24mm	< 65.5° / 28mm	< 54.4° / 35mm	< 39.6° / 50mm	< 28.8° / 70mm	ANGLE OF VISION / LENS FOCAL LENGTH	70mm / 28.8° >	50mm / 39.6° >	35mm / 54.4° >	28mm / 65.5° >	24mm / 73.7° >
----------------	----------------	----------------	----------------	----------------	-------------------------------------	----------------	----------------	----------------	----------------	----------------

Project Number:	6085	Document Number:	VIS-RES4	Revision:	04
Project Name:	N6 GALWAY CITY RING ROAD	Document Title:	RESIDENTS PHOTOMONTAGES (CASTLEGAR)	Date:	23 September 2024



< 73.7° / 24mm	< 65.5° / 28mm	< 54.4° / 35mm	< 39.6° / 50mm	< 28.8° / 70mm	ANGLE OF VISION / LENS FOCAL LENGTH	70mm / 28.8° >	50mm / 39.6° >	35mm / 54.4° >	28mm / 65.5° >	24mm / 73.7° >
----------------	----------------	----------------	----------------	----------------	-------------------------------------	----------------	----------------	----------------	----------------	----------------

Figure: 1.2.3

Rev: 02
View 2
Post Maturation

BSM
Est. 1968

Brady Shipman
Martin.
Built.
Environment.

Project Number:	6085	Document Number:	VIS-RES4	Revision:	04
Project Name:	N6 GALWAY CITY RING ROAD	Document Title:	RESIDENTS PHOTOMONTAGES (CASTLEGAR)	Date:	23 September 2024



THE IMAGE ABOVE IS A PANORAMA ASSEMBLED FROM TWO OR MORE PHOTOGRAPHS

Figure: 1.3.1a

Rev: 00
View 3
As Existing (2024)

BSM
Est. 1968

Brady Shipman
Martin.
Built.
Environment.

Project Number:	6085	Document Number:	VIS-RES4	Revision:	04
Project Name:	N6 GALWAY CITY RING ROAD	Document Title:	RESIDENTS PHOTOMONTAGES (CASTLEGAR)	Date:	23 September 2024



THE IMAGE ABOVE IS A PANORAMA ASSEMBLED FROM TWO OR MORE PHOTOGRAPHS

Figure: 1.3.1

Project Number:	6085	Document Number:	VIS-RES4	Revision:	04
Project Name:	N6 GALWAY CITY RING ROAD	Document Title:	RESIDENTS PHOTOMONTAGES (CASTLEGAR)	Date:	23 September 2024



THE IMAGE ABOVE IS A PANORAMA ASSEMBLED FROM TWO OR MORE PHOTOGRAPHS

Project Number:	6085	Document Number:	VIS-RES4	Revision:	04
Project Name:	N6 GALWAY CITY RING ROAD	Document Title:	RESIDENTS PHOTOMONTAGES (CASTLEGAR)	Date:	23 September 2024



THE IMAGE ABOVE IS A PANORAMA ASSEMBLED FROM TWO OR MORE PHOTOGRAPHS

Project Number:	6085	Document Number:	VIS-RES4	Revision:	04
Project Name:	N6 GALWAY CITY RING ROAD	Document Title:	RESIDENTS PHOTOMONTAGES (CASTLEGAR)	Date:	23 September 2024



< 73.7° / 24mm	< 65.5° / 28mm	< 54.4° / 35mm	< 39.6° / 50mm	< 28.8° / 70mm	ANGLE OF VISION / LENS FOCAL LENGTH	70mm / 28.8° >	50mm / 39.6° >	35mm / 54.4° >	28mm / 65.5° >	24mm / 73.7° >
----------------	----------------	----------------	----------------	----------------	-------------------------------------	----------------	----------------	----------------	----------------	----------------

Figure: 1.4.1a

Rev: 00
View 4
As Existing (2024)

BSM
Est. 1968

Brady Shipman
Martin.
Built.
Environment.

Project Number:	6085	Document Number:	VIS-RES4	Revision:	04
Project Name:	N6 GALWAY CITY RING ROAD	Document Title:	RESIDENTS PHOTOMONTAGES (CASTLEGAR)	Date:	23 September 2024



< 73.7° / 24mm	< 65.5° / 28mm	< 54.4° / 35mm	< 39.6° / 50mm	< 28.8° / 70mm	ANGLE OF VISION / LENS FOCAL LENGTH	70mm / 28.8° >	50mm / 39.6° >	35mm / 54.4° >	28mm / 65.5° >	24mm / 73.7° >
----------------	----------------	----------------	----------------	----------------	-------------------------------------	----------------	----------------	----------------	----------------	----------------

Figure: 1.4.1

Rev: 00
View 4
As Existing

BSM
Est. 1968

Brady Shipman
Martin.
Built.
Environment.

Project Number:	6085	Document Number:	VIS-RES4	Revision:	04
Project Name:	N6 GALWAY CITY RING ROAD	Document Title:	RESIDENTS PHOTOMONTAGES (CASTLEGAR)	Date:	23 September 2024



< 73.7° / 24mm	< 65.5° / 28mm	< 54.4° / 35mm	< 39.6° / 50mm	< 28.8° / 70mm	ANGLE OF VISION / LENS FOCAL LENGTH	70mm / 28.8° >	50mm / 39.6° >	35mm / 54.4° >	28mm / 65.5° >	24mm / 73.7° >
----------------	----------------	----------------	----------------	----------------	-------------------------------------	----------------	----------------	----------------	----------------	----------------

Figure: 1.4.2

Rev: 02
View 4
Post Construction

BSM
Est. 1968

Brady Shipman
Martin.
Built.
Environment.

Project Number:	6085	Document Number:	VIS-RES4	Revision:	04
Project Name:	N6 GALWAY CITY RING ROAD	Document Title:	RESIDENTS PHOTOMONTAGES (CASTLEGAR)	Date:	23 September 2024



< 73.7° / 24mm	< 65.5° / 28mm	< 54.4° / 35mm	< 39.6° / 50mm	< 28.8° / 70mm	ANGLE OF VISION / LENS FOCAL LENGTH	70mm / 28.8° >	50mm / 39.6° >	35mm / 54.4° >	28mm / 65.5° >	24mm / 73.7° >
----------------	----------------	----------------	----------------	----------------	-------------------------------------	----------------	----------------	----------------	----------------	----------------

Figure: 1.4.3

Rev: 02
View 4
Post Maturation

BSM
Est. 1968

Brady Shipman
Martin.
Built.
Environment.

Project Number:	6085	Document Number:	VIS-RES4	Revision:	04
Project Name:	N6 GALWAY CITY RING ROAD	Document Title:	RESIDENTS PHOTOMONTAGES (CASTLEGAR)	Date:	23 September 2024



< 73.7° / 24mm	< 65.5° / 28mm	< 54.4° / 35mm	< 39.6° / 50mm	< 28.8° / 70mm	ANGLE OF VISION / LENS FOCAL LENGTH	70mm / 28.8° >	50mm / 39.6° >	35mm / 54.4° >	28mm / 65.5° >	24mm / 73.7° >
----------------	----------------	----------------	----------------	----------------	-------------------------------------	----------------	----------------	----------------	----------------	----------------

Project Number:	6085	Document Number:	VIS-RES4	Revision:	04
Project Name:	N6 GALWAY CITY RING ROAD	Document Title:	RESIDENTS PHOTOMONTAGES (CASTLEGAR)	Date:	23 September 2024



< 73.7° / 24mm	< 65.5° / 28mm	< 54.4° / 35mm	< 39.6° / 50mm	< 28.8° / 70mm	ANGLE OF VISION / LENS FOCAL LENGTH	70mm / 28.8° >	50mm / 39.6° >	35mm / 54.4° >	28mm / 65.5° >	24mm / 73.7° >
----------------	----------------	----------------	----------------	----------------	-------------------------------------	----------------	----------------	----------------	----------------	----------------

Figure: 1.5.1

Rev: 00
View 5
As Existing

BSM

Est. 1968

Brady Shipman
Martin.
Built.
Environment.

Project Number:	6085	Document Number:	VIS-RES4	Revision:	04
Project Name:	N6 GALWAY CITY RING ROAD	Document Title:	RESIDENTS PHOTOMONTAGES (CASTLEGAR)	Date:	23 September 2024



< 73.7° / 24mm	< 65.5° / 28mm	< 54.4° / 35mm	< 39.6° / 50mm	< 28.8° / 70mm	ANGLE OF VISION / LENS FOCAL LENGTH	70mm / 28.8° >	50mm / 39.6° >	35mm / 54.4° >	28mm / 65.5° >	24mm / 73.7° >
----------------	----------------	----------------	----------------	----------------	-------------------------------------	----------------	----------------	----------------	----------------	----------------

Figure: 1.5.2

Rev: 02
View 5
Post Construction

BSM
Est. 1968

Brady Shipman
Martin.
Built.
Environment.

Project Number:	6085	Document Number:	VIS-RES4	Revision:	04
Project Name:	N6 GALWAY CITY RING ROAD	Document Title:	RESIDENTS PHOTOMONTAGES (CASTLEGAR)	Date:	23 September 2024



< 73.7° / 24mm	< 65.5° / 28mm	< 54.4° / 35mm	< 39.6° / 50mm	< 28.8° / 70mm	ANGLE OF VISION / LENS FOCAL LENGTH	70mm / 28.8° >	50mm / 39.6° >	35mm / 54.4° >	28mm / 65.5° >	24mm / 73.7° >
----------------	----------------	----------------	----------------	----------------	-------------------------------------	----------------	----------------	----------------	----------------	----------------

Figure: 1.5.3

Rev: 02
View 5
Post Maturation

BSM
Est. 1968

Brady Shipman
Martin.
Built.
Environment.

Project Number:	6085	Document Number:	VIS-RES4	Revision:	04
Project Name:	N6 GALWAY CITY RING ROAD	Document Title:	RESIDENTS PHOTOMONTAGES (CASTLEGAR)	Date:	23 September 2024



< 73.7° / 24mm	< 65.5° / 28mm	< 54.4° / 35mm	< 39.6° / 50mm	< 28.8° / 70mm	ANGLE OF VISION / LENS FOCAL LENGTH	70mm / 28.8° >	50mm / 39.6° >	35mm / 54.4° >	28mm / 65.5° >	24mm / 73.7° >
----------------	----------------	----------------	----------------	----------------	-------------------------------------	----------------	----------------	----------------	----------------	----------------

Figure: 1.6.1a

Rev: 00
View 6
As Existing (2024)

BSM

Brady Shipman
Martin.
Built.
Environment.
Est. 1968

Project Number:	6085	Document Number:	VIS-RES4	Revision:	04
Project Name:	N6 GALWAY CITY RING ROAD	Document Title:	RESIDENTS PHOTOMONTAGES (CASTLEGAR)	Date:	23 September 2024



< 73.7° / 24mm	< 65.5° / 28mm	< 54.4° / 35mm	< 39.6° / 50mm	< 28.8° / 70mm	ANGLE OF VISION / LENS FOCAL LENGTH	70mm / 28.8° >	50mm / 39.6° >	35mm / 54.4° >	28mm / 65.5° >	24mm / 73.7° >
----------------	----------------	----------------	----------------	----------------	-------------------------------------	----------------	----------------	----------------	----------------	----------------

Figure: 1.6.1

Rev: 00
View 6
As Existing

BSM

Brady Shipman
Martin.
Built.
Environment.

Est.
1968

Project Number:	6085	Document Number:	VIS-RES4	Revision:	04
Project Name:	N6 GALWAY CITY RING ROAD	Document Title:	RESIDENTS PHOTOMONTAGES (CASTLEGAR)	Date:	23 September 2024



< 73.7° / 24mm	< 65.5° / 28mm	< 54.4° / 35mm	< 39.6° / 50mm	< 28.8° / 70mm	ANGLE OF VISION / LENS FOCAL LENGTH	70mm / 28.8° >	50mm / 39.6° >	35mm / 54.4° >	28mm / 65.5° >	24mm / 73.7° >
----------------	----------------	----------------	----------------	----------------	-------------------------------------	----------------	----------------	----------------	----------------	----------------

Project Number:	6085	Document Number:	VIS-RES4	Revision:	04
Project Name:	N6 GALWAY CITY RING ROAD	Document Title:	RESIDENTS PHOTOMONTAGES (CASTLEGAR)	Date:	23 September 2024



< 73.7° / 24mm	< 65.5° / 28mm	< 54.4° / 35mm	< 39.6° / 50mm	< 28.8° / 70mm	ANGLE OF VISION / LENS FOCAL LENGTH	70mm / 28.8° >	50mm / 39.6° >	35mm / 54.4° >	28mm / 65.5° >	24mm / 73.7° >
----------------	----------------	----------------	----------------	----------------	-------------------------------------	----------------	----------------	----------------	----------------	----------------

Figure: 1.6.3

Rev: 02
View 6
Post Maturation

BSM
Est. 1968

Brady Shipman
Martin.
Built.
Environment.

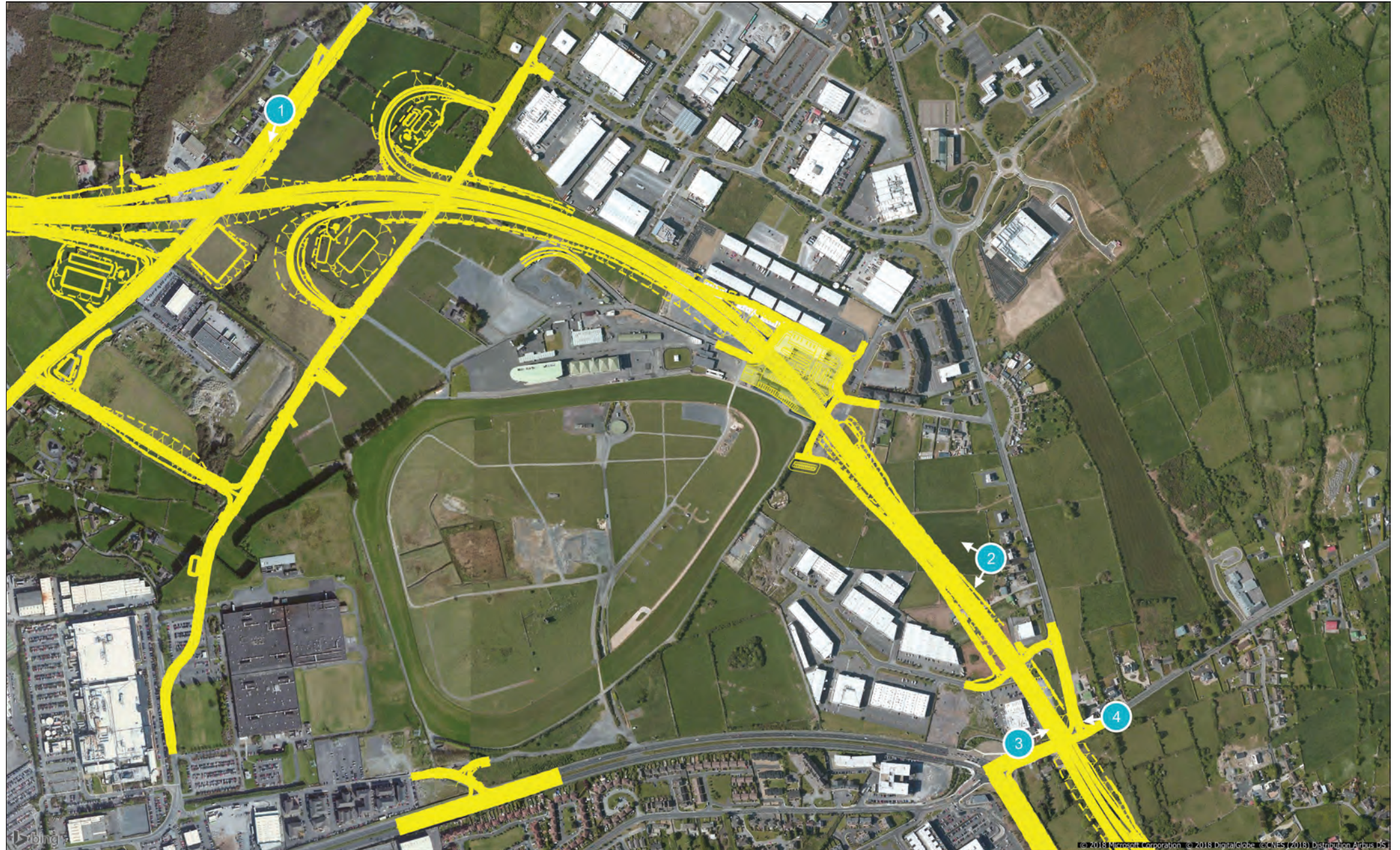


Figure: 1.0

Rev: 00
View Location Map

Project Number:	6085	Document Number:	VIS-RES5	Revision:	04
Project Name:	N6 GALWAY CITY RING ROAD	Document Title:	RESIDENTS PHOTOMONTAGES (BALLYBRIT)	Date:	23 September 2024



< 73.7° / 24mm	< 65.5° / 28mm	< 54.4° / 35mm	< 39.6° / 50mm	< 28.8° / 70mm	ANGLE OF VISION / LENS FOCAL LENGTH	70mm / 28.8° >	50mm / 39.6° >	35mm / 54.4° >	28mm / 65.5° >	24mm / 73.7° >
----------------	----------------	----------------	----------------	----------------	-------------------------------------	----------------	----------------	----------------	----------------	----------------

Project Number:	6085	Document Number:	VIS-RES5	Revision:	04
Project Name:	N6 GALWAY CITY RING ROAD	Document Title:	RESIDENTS PHOTOMONTAGES (BALLYBRIT)	Date:	23 September 2024



< 73.7° / 24mm	< 65.5° / 28mm	< 54.4° / 35mm	< 39.6° / 50mm	< 28.8° / 70mm	ANGLE OF VISION / LENS FOCAL LENGTH	70mm / 28.8° >	50mm / 39.6° >	35mm / 54.4° >	28mm / 65.5° >	24mm / 73.7° >
----------------	----------------	----------------	----------------	----------------	-------------------------------------	----------------	----------------	----------------	----------------	----------------

Figure: 1.1.1

Rev: 00
View 1
As Existing

BSM

Est. 1968

Brady Shipman
Martin.
Built.
Environment.

Project Number:	6085	Document Number:	VIS-RES5	Revision:	04
Project Name:	N6 GALWAY CITY RING ROAD	Document Title:	RESIDENTS PHOTOMONTAGES (BALLYBRIT)	Date:	23 September 2024



< 73.7° / 24mm	< 65.5° / 28mm	< 54.4° / 35mm	< 39.6° / 50mm	< 28.8° / 70mm	ANGLE OF VISION / LENS FOCAL LENGTH	70mm / 28.8° >	50mm / 39.6° >	35mm / 54.4° >	28mm / 65.5° >	24mm / 73.7° >
----------------	----------------	----------------	----------------	----------------	-------------------------------------	----------------	----------------	----------------	----------------	----------------

Project Number:	6085	Document Number:	VIS-RES5	Revision:	04
Project Name:	N6 GALWAY CITY RING ROAD	Document Title:	RESIDENTS PHOTOMONTAGES (BALLYBRIT)	Date:	23 September 2024



< 73.7° / 24mm	< 65.5° / 28mm	< 54.4° / 35mm	< 39.6° / 50mm	< 28.8° / 70mm	ANGLE OF VISION / LENS FOCAL LENGTH	70mm / 28.8° >	50mm / 39.6° >	35mm / 54.4° >	28mm / 65.5° >	24mm / 73.7° >
----------------	----------------	----------------	----------------	----------------	-------------------------------------	----------------	----------------	----------------	----------------	----------------

Project Number:	6085	Document Number:	VIS-RES5	Revision:	04
Project Name:	N6 GALWAY CITY RING ROAD	Document Title:	RESIDENTS PHOTOMONTAGES (BALLYBRIT)	Date:	23 September 2024



< 73.7° / 24mm	< 65.5° / 28mm	< 54.4° / 35mm	< 39.6° / 50mm	< 28.8° / 70mm	ANGLE OF VISION / LENS FOCAL LENGTH	70mm / 28.8° >	50mm / 39.6° >	35mm / 54.4° >	28mm / 65.5° >	24mm / 73.7° >
----------------	----------------	----------------	----------------	----------------	-------------------------------------	----------------	----------------	----------------	----------------	----------------

Figure: 1.2.1a

Rev: 00
View 2A
As Existing (2024)

BSM
Est. 1968

Brady Shipman
Martin.
Built.
Environment.

Project Number:	6085	Document Number:	VIS-RES5	Revision:	04
Project Name:	N6 GALWAY CITY RING ROAD	Document Title:	RESIDENTS PHOTOMONTAGES (BALLYBRIT)	Date:	23 September 2024



< 73.7° / 24mm	< 65.5° / 28mm	< 54.4° / 35mm	< 39.6° / 50mm	< 28.8° / 70mm	ANGLE OF VISION / LENS FOCAL LENGTH	70mm / 28.8° >	50mm / 39.6° >	35mm / 54.4° >	28mm / 65.5° >	24mm / 73.7° >
----------------	----------------	----------------	----------------	----------------	-------------------------------------	----------------	----------------	----------------	----------------	----------------

Figure: 1.2.1

Rev: 00
View 2A
As Existing

BSM
Est. 1968

Brady Shipman
Martin.
Built.
Environment.

Project Number:	6085	Document Number:	VIS-RES5	Revision:	04
Project Name:	N6 GALWAY CITY RING ROAD	Document Title:	RESIDENTS PHOTOMONTAGES (BALLYBRIT)	Date:	23 September 2024



< 73.7° / 24mm	< 65.5° / 28mm	< 54.4° / 35mm	< 39.6° / 50mm	< 28.8° / 70mm	ANGLE OF VISION / LENS FOCAL LENGTH	70mm / 28.8° >	50mm / 39.6° >	35mm / 54.4° >	28mm / 65.5° >	24mm / 73.7° >
----------------	----------------	----------------	----------------	----------------	-------------------------------------	----------------	----------------	----------------	----------------	----------------

Figure: 1.2.2

Rev: 02
View 2A
Post Construction

BSM
Est. 1968

Brady Shipman
Martin.
Built.
Environment.

Project Number:	6085	Document Number:	VIS-RES5	Revision:	04
Project Name:	N6 GALWAY CITY RING ROAD	Document Title:	RESIDENTS PHOTOMONTAGES (BALLYBRIT)	Date:	23 September 2024



< 73.7° / 24mm	< 65.5° / 28mm	< 54.4° / 35mm	< 39.6° / 50mm	< 28.8° / 70mm	ANGLE OF VISION / LENS FOCAL LENGTH	70mm / 28.8° >	50mm / 39.6° >	35mm / 54.4° >	28mm / 65.5° >	24mm / 73.7° >
----------------	----------------	----------------	----------------	----------------	-------------------------------------	----------------	----------------	----------------	----------------	----------------

Figure: 1.2.3

Rev: 02
View 2A
Post Maturation

BSM
Est. 1968

Brady Shipman
Martin.
Built.
Environment.

Project Number:	6085	Document Number:	VIS-RES5	Revision:	04
Project Name:	N6 GALWAY CITY RING ROAD	Document Title:	RESIDENTS PHOTOMONTAGES (BALLYBRIT)	Date:	23 September 2024



< 73.7° / 24mm	< 65.5° / 28mm	< 54.4° / 35mm	< 39.6° / 50mm	< 28.8° / 70mm	ANGLE OF VISION / LENS FOCAL LENGTH	70mm / 28.8° >	50mm / 39.6° >	35mm / 54.4° >	28mm / 65.5° >	24mm / 73.7° >
----------------	----------------	----------------	----------------	----------------	-------------------------------------	----------------	----------------	----------------	----------------	----------------

Figure: 1.2.4a

Rev: 00
View 2B
As Existing (2024)

BSM
Est. 1968

Brady Shipman
Martin.
Built.
Environment.

Project Number:	6085	Document Number:	VIS-RES5	Revision:	04
Project Name:	N6 GALWAY CITY RING ROAD	Document Title:	RESIDENTS PHOTOMONTAGES (BALLYBRIT)	Date:	23 September 2024



< 73.7° / 24mm	< 65.5° / 28mm	< 54.4° / 35mm	< 39.6° / 50mm	< 28.8° / 70mm	ANGLE OF VISION / LENS FOCAL LENGTH	70mm / 28.8° >	50mm / 39.6° >	35mm / 54.4° >	28mm / 65.5° >	24mm / 73.7° >
----------------	----------------	----------------	----------------	----------------	-------------------------------------	----------------	----------------	----------------	----------------	----------------

Figure: 1.2.4

Rev: 00
View 2B
As Existing

BSM

Brady Shipman
Martin.
Built.
Environment.

Est.
1968

Project Number:	6085	Document Number:	VIS-RES5	Revision:	04
Project Name:	N6 GALWAY CITY RING ROAD	Document Title:	RESIDENTS PHOTOMONTAGES (BALLYBRIT)	Date:	23 September 2024



< 73.7° / 24mm	< 65.5° / 28mm	< 54.4° / 35mm	< 39.6° / 50mm	< 28.8° / 70mm	ANGLE OF VISION / LENS FOCAL LENGTH	70mm / 28.8° >	50mm / 39.6° >	35mm / 54.4° >	28mm / 65.5° >	24mm / 73.7° >
----------------	----------------	----------------	----------------	----------------	-------------------------------------	----------------	----------------	----------------	----------------	----------------

Figure: 1.2.5

Rev: 02
View 2B
Post Construction

BSM

Est. 1968

Brady Shipman
Martin.
Built.
Environment.

Project Number:	6085	Document Number:	VIS-RES5	Revision:	04
Project Name:	N6 GALWAY CITY RING ROAD	Document Title:	RESIDENTS PHOTOMONTAGES (BALLYBRIT)	Date:	23 September 2024



< 73.7° / 24mm	< 65.5° / 28mm	< 54.4° / 35mm	< 39.6° / 50mm	< 28.8° / 70mm	ANGLE OF VISION / LENS FOCAL LENGTH	70mm / 28.8° >	50mm / 39.6° >	35mm / 54.4° >	28mm / 65.5° >	24mm / 73.7° >
----------------	----------------	----------------	----------------	----------------	-------------------------------------	----------------	----------------	----------------	----------------	----------------

Project Number:	6085	Document Number:	VIS-RES5	Revision:	04
Project Name:	N6 GALWAY CITY RING ROAD	Document Title:	RESIDENTS PHOTOMONTAGES (BALLYBRIT)	Date:	23 September 2024



< 73.7° / 24mm	< 65.5° / 28mm	< 54.4° / 35mm	< 39.6° / 50mm	< 28.8° / 70mm	ANGLE OF VISION / LENS FOCAL LENGTH	70mm / 28.8° >	50mm / 39.6° >	35mm / 54.4° >	28mm / 65.5° >	24mm / 73.7° >
----------------	----------------	----------------	----------------	----------------	-------------------------------------	----------------	----------------	----------------	----------------	----------------

Figure: 1.3.1a

Rev: 00
View 3
As Existing (2024)

BSM
Est. 1968

Brady Shipman
Martin.
Built.
Environment.

Project Number:	6085	Document Number:	VIS-RES5	Revision:	04
Project Name:	N6 GALWAY CITY RING ROAD	Document Title:	RESIDENTS PHOTOMONTAGES (BALLYBRIT)	Date:	23 September 2024



< 73.7° / 24mm	< 65.5° / 28mm	< 54.4° / 35mm	< 39.6° / 50mm	< 28.8° / 70mm	ANGLE OF VISION / LENS FOCAL LENGTH	70mm / 28.8° >	50mm / 39.6° >	35mm / 54.4° >	28mm / 65.5° >	24mm / 73.7° >
----------------	----------------	----------------	----------------	----------------	-------------------------------------	----------------	----------------	----------------	----------------	----------------

Figure: 1.3.1

Rev: 00
View 3
As Existing

BSM
Est. 1968

Brady Shipman
Martin.
Built.
Environment.

Project Number:	6085	Document Number:	VIS-RES5	Revision:	04
Project Name:	N6 GALWAY CITY RING ROAD	Document Title:	RESIDENTS PHOTOMONTAGES (BALLYBRIT)	Date:	23 September 2024



< 73.7° / 24mm	< 65.5° / 28mm	< 54.4° / 35mm	< 39.6° / 50mm	< 28.8° / 70mm	ANGLE OF VISION / LENS FOCAL LENGTH	70mm / 28.8° >	50mm / 39.6° >	35mm / 54.4° >	28mm / 65.5° >	24mm / 73.7° >
----------------	----------------	----------------	----------------	----------------	-------------------------------------	----------------	----------------	----------------	----------------	----------------

Project Number:	6085	Document Number:	VIS-RES5	Revision:	04
Project Name:	N6 GALWAY CITY RING ROAD	Document Title:	RESIDENTS PHOTOMONTAGES (BALLYBRIT)	Date:	23 September 2024



< 73.7° / 24mm	< 65.5° / 28mm	< 54.4° / 35mm	< 39.6° / 50mm	< 28.8° / 70mm	ANGLE OF VISION / LENS FOCAL LENGTH	70mm / 28.8° >	50mm / 39.6° >	35mm / 54.4° >	28mm / 65.5° >	24mm / 73.7° >
----------------	----------------	----------------	----------------	----------------	-------------------------------------	----------------	----------------	----------------	----------------	----------------

Project Number:	6085	Document Number:	VIS-RES5	Revision:	04
Project Name:	N6 GALWAY CITY RING ROAD	Document Title:	RESIDENTS PHOTOMONTAGES (BALLYBRIT)	Date:	23 September 2024



< 73.7° / 24mm	< 65.5° / 28mm	< 54.4° / 35mm	< 39.6° / 50mm	< 28.8° / 70mm	ANGLE OF VISION / LENS FOCAL LENGTH	70mm / 28.8° >	50mm / 39.6° >	35mm / 54.4° >	28mm / 65.5° >	24mm / 73.7° >
----------------	----------------	----------------	----------------	----------------	-------------------------------------	----------------	----------------	----------------	----------------	----------------

Figure: 1.4.1a

Rev: 00
View 4
As Existing (2024)

BSM
Est. 1968

Brady Shipman
Martin.
Built.
Environment.

Project Number:	6085	Document Number:	VIS-RES5	Revision:	04
Project Name:	N6 GALWAY CITY RING ROAD	Document Title:	RESIDENTS PHOTOMONTAGES (BALLYBRIT)	Date:	23 September 2024



< 73.7° / 24mm	< 65.5° / 28mm	< 54.4° / 35mm	< 39.6° / 50mm	< 28.8° / 70mm	ANGLE OF VISION / LENS FOCAL LENGTH	70mm / 28.8° >	50mm / 39.6° >	35mm / 54.4° >	28mm / 65.5° >	24mm / 73.7° >
----------------	----------------	----------------	----------------	----------------	-------------------------------------	----------------	----------------	----------------	----------------	----------------

Figure: 1.4.1

Rev: 00
View 4
As Existing

BSM

Brady Shipman
Martin.
Built.
Environment.

Est.
1968

Project Number:	6085	Document Number:	VIS-RES5	Revision:	04
Project Name:	N6 GALWAY CITY RING ROAD	Document Title:	RESIDENTS PHOTOMONTAGES (BALLYBRIT)	Date:	23 September 2024



< 73.7° / 24mm	< 65.5° / 28mm	< 54.4° / 35mm	< 39.6° / 50mm	< 28.8° / 70mm	ANGLE OF VISION / LENS FOCAL LENGTH	70mm / 28.8° >	50mm / 39.6° >	35mm / 54.4° >	28mm / 65.5° >	24mm / 73.7° >
----------------	----------------	----------------	----------------	----------------	-------------------------------------	----------------	----------------	----------------	----------------	----------------

Project Number:	6085	Document Number:	VIS-RES5	Revision:	04
Project Name:	N6 GALWAY CITY RING ROAD	Document Title:	RESIDENTS PHOTOMONTAGES (BALLYBRIT)	Date:	23 September 2024



< 73.7° / 24mm	< 65.5° / 28mm	< 54.4° / 35mm	< 39.6° / 50mm	< 28.8° / 70mm	ANGLE OF VISION / LENS FOCAL LENGTH	70mm / 28.8° >	50mm / 39.6° >	35mm / 54.4° >	28mm / 65.5° >	24mm / 73.7° >
----------------	----------------	----------------	----------------	----------------	-------------------------------------	----------------	----------------	----------------	----------------	----------------

Figure: 1.4.3

Rev: 02
View 4
Post Maturation

BSM
Est. 1968

Brady Shipman
Martin.
Built.
Environment.